

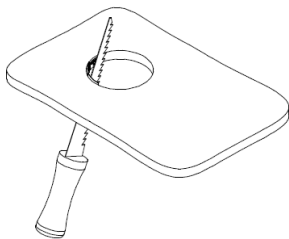
STELLA QJ SERIES DOWNLIGHT INSTALLATION INSTRUCTIONS



WARNING - RISK OF FIRE AND ELECTRICAL SHOCK. FIXTURE MUST BE INSTALLED BY A QUALIFIED ELECTRICIAN ONLY. FIXTURE IS INTENDED FOR INSTALLATION IN ACCORDANCE WITH THE NATIONAL ELECTRICAL CODE, LOCAL AND FEDERAL SPECIFICATIONS. DISCONNECT POWER AT ELECTRICAL PANEL BEFORE SERVICING.

CONNECTION OF LUMINAIRE TO POWERED DRIVER WILL RESULT IN PERMANENT DAMAGE TO THE LED AND VOIDED PRODUCT WARRANTY.

RETAIN THESE INSTRUCTIONS FOR MAINTENANCE REFERENCE.

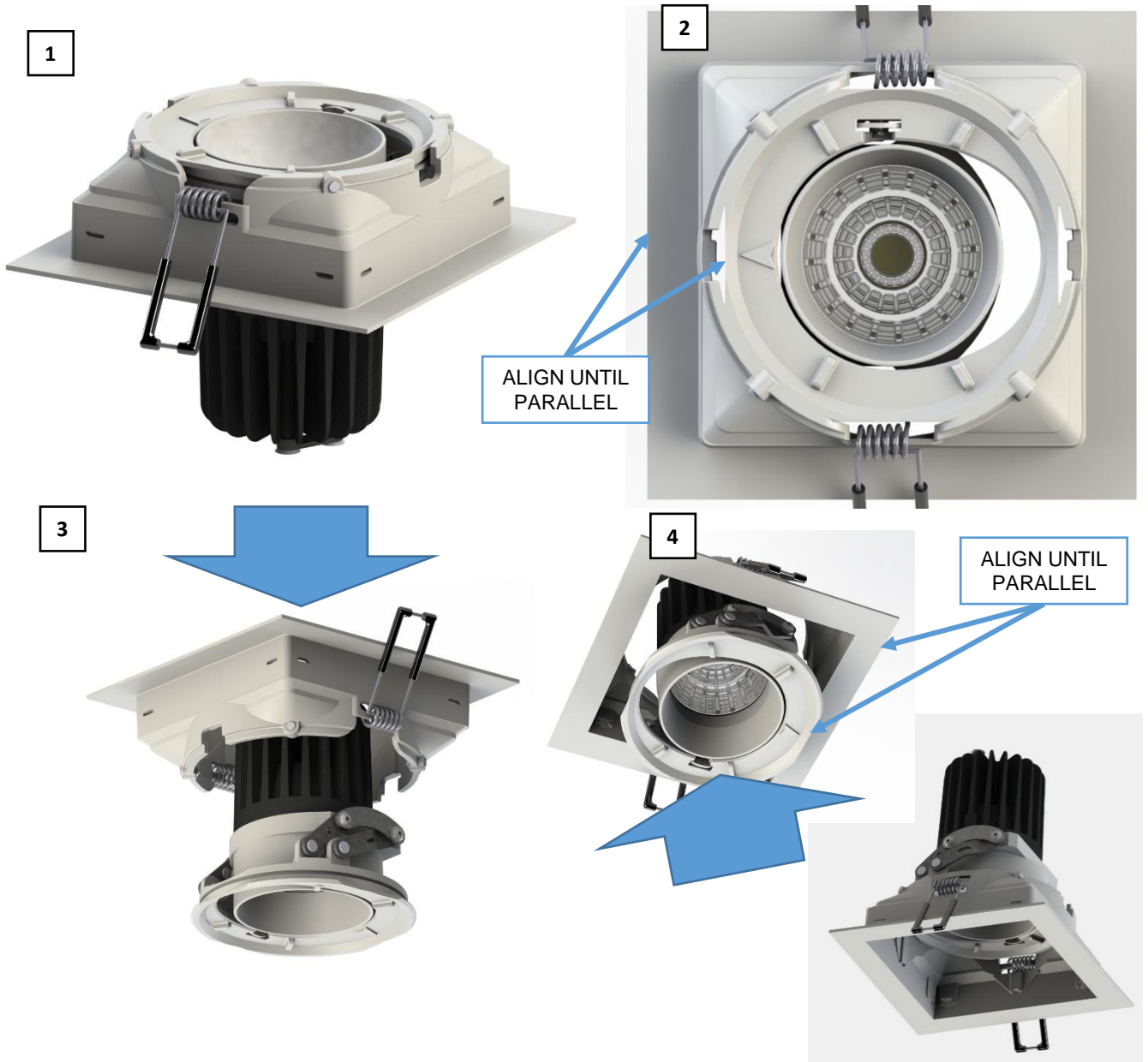


NOTE: ROUND FRAME INSTALLATION SHOWN, FOLLOW SAME PROCEDURE FOR SQUARE FRAME.

CUTOUT TABLE

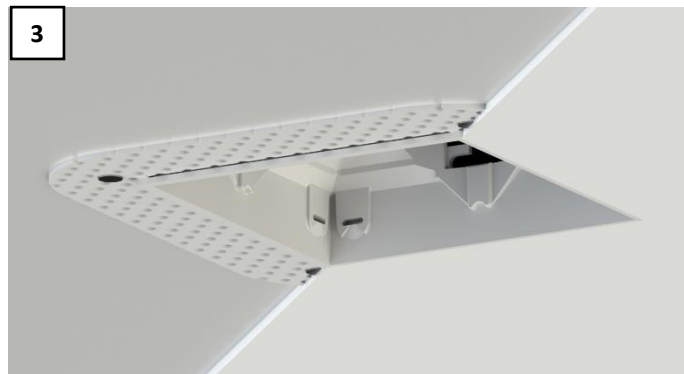
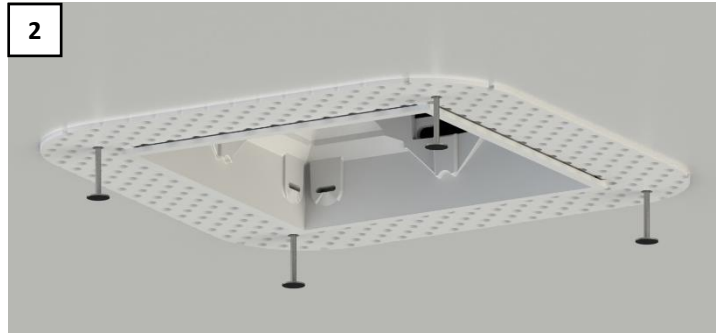
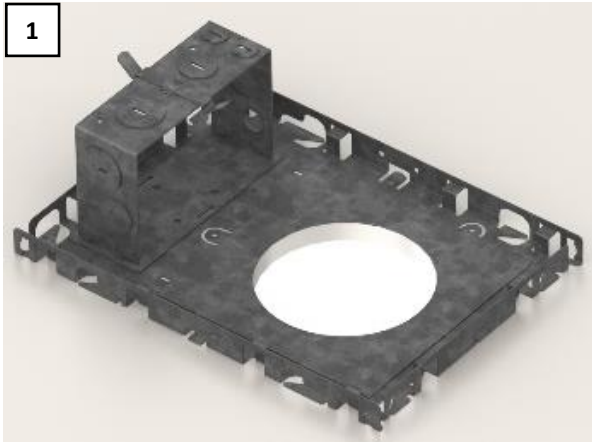
FIXTURE	CUTOUT
STELLA 3QJ	96mm X 96mm / 3.75" X 3.75"
STELLA 3QWJ	96mm X 96mm / 3.75" X 3.75"

FIXTURE PREPARATION



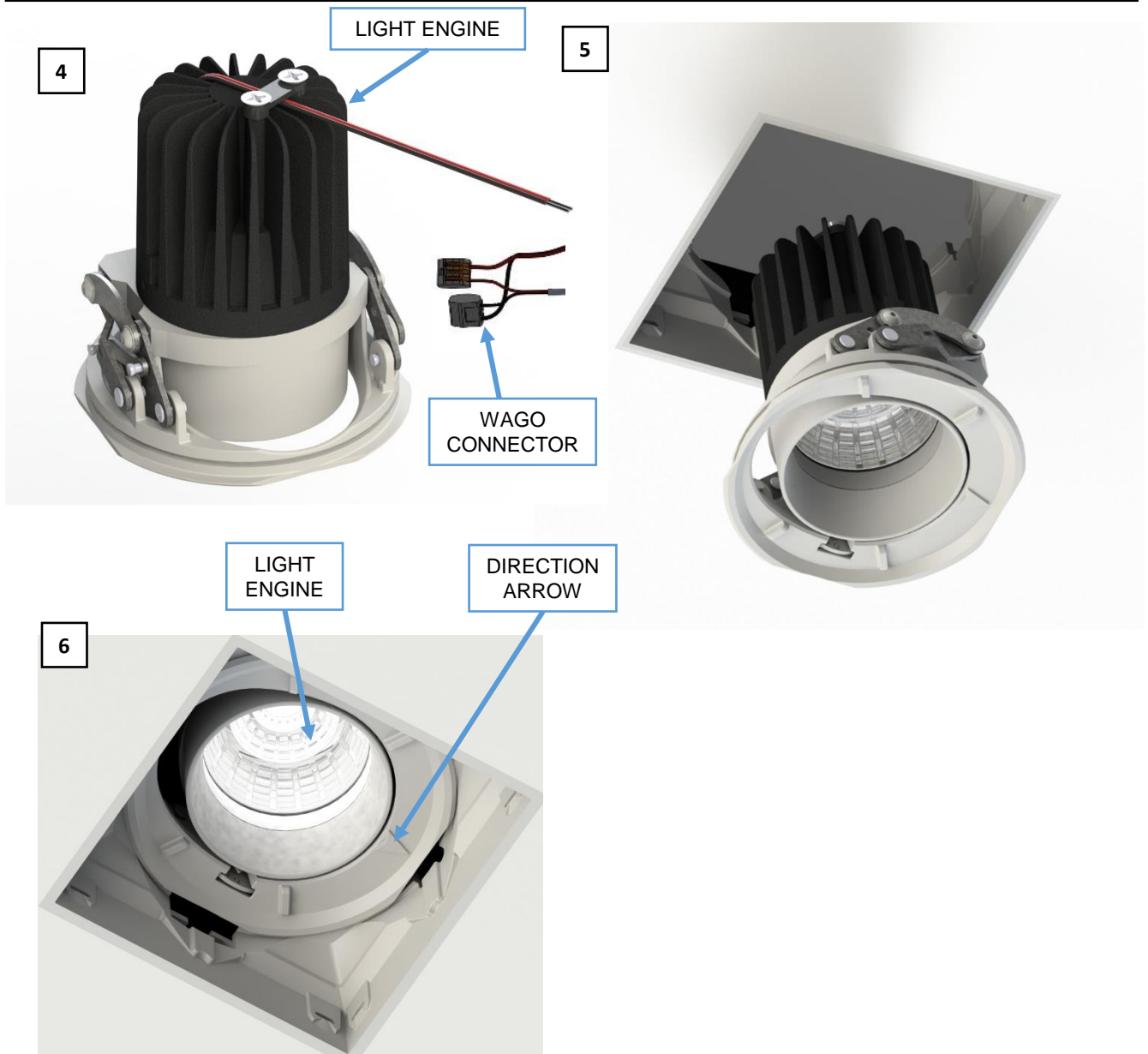
1. LOCATE FIXTURE AND CAREFULLY REMOVE FROM THE BOX. (FIGURE 1)
2. ROTATE THE LIGHT ENGINE SO THAT THE 4 FLAT SIDES ON IT ARE PARALLEL TO THE 4 TRIM SIDES. (FIGURE 2)
3. CAREFULLY PUSH LIGHT ENGINE OUT OF TRIM FRAME. (FIGURE 3)
4. TURN THE TRIM FRAME AROUND AND INSERT THE LIGHT ENGINE WITH THE HEATSINK FIRST. MAKE SURE THE FLAT SIDES ON THE LIGHT ENGINE ARE PARALLEL WITH THE TRIM SIDES. FIRMLY PRESS THE LIGHT ENGINE INTO THE TRIM FRAME UNTIL IT SNAPS IN PLACE. (FIGURE 4)

FIXTURE INSTALLATION



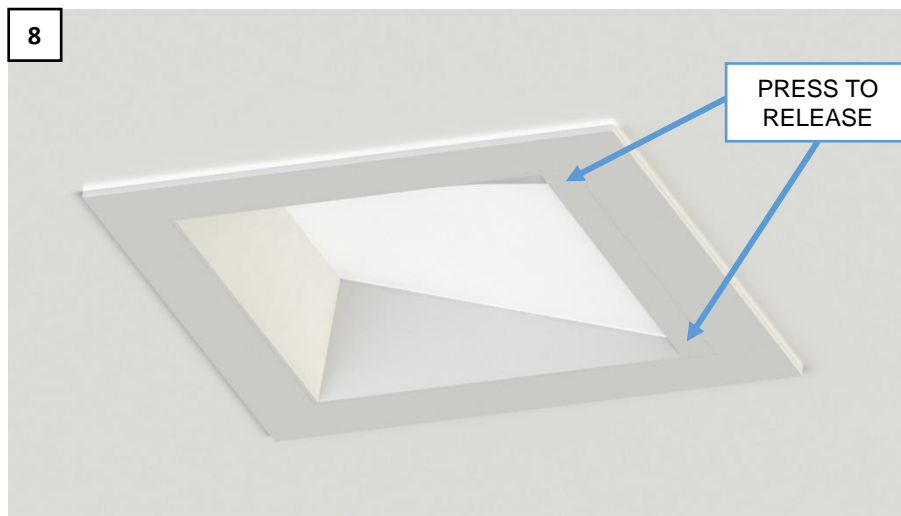
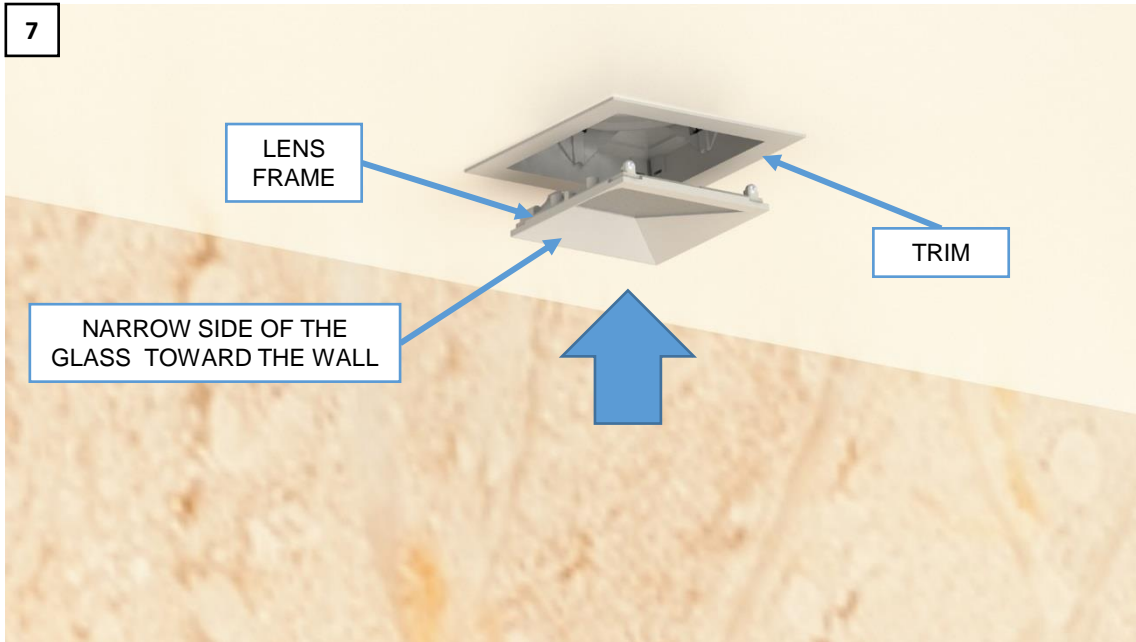
1. IF USING AN ENCLOSURE, INSTALL IT USING HANGER BARS. INSTALL POWER SUPPLY AND MAKE ELECTRICAL CONNECTIONS. BLACK TO BLACK, WHITE TO WHITE AND GREEN TO GREEN. CUT HOLE IN THE CEILING DRYWALL USING THE HOLE IN THE ENCLOSURE AS A GUIDE. SEE ENCLOSURE INSTALLATION INSTRUCTIONS FOR FURTHER INFORMATION. (FIGURE 1)
2. IF NOT USING AN ENCLOSURE, CUT A HOLE PER THE CEILING CUTOUT TABLE. INSTALL THE POWER SUPPLY USING THE DRIVER RETROFIT KIT. REFER TO THE DRIVER RETROFIT KIT INSTALLATION INSTRUCTIONS FOR INFORMATION ON HOW TO INSTALL. (FIGURE 2)
3. INSTALL MUD RING AS SHOWN. USE FIBERGLASS TAPE ON THE EDGES OF THE PERFORATED SHEET. SECURE THE MUD RING WITH 3 NAILS IN THE HOLES OF THE PERFORATED SHEET.
4. CONNECT OUTPUT OF POWER SUPPLY TO THE FIXTURE. RED TO RED, BLACK TO BLACK USING PROVIDED WAGO CONNECTORS. (FIGURE 3)

FIXTURE INSTALLATION



4. OPEN SPRINGS AND INSERT THE FIXTURE INTO THE TRIM OPENING WITH THE HEATSINK FIRST. MAKE SURE THE WIRES ARE ALL THE WAY IN. (FIGURE 4)
5. TURN POWER BACK ON TO THE FIXTURE. POINT THE DIRECTION ARROW ON THE FIXTURE TO THE DIRECTION PERPENDICULAR TO THE WALL INTENDED TO BE ILLUMINATED. PUSH BACK ON THE LIGHT ENGINE TO ADJUST THE TILT. THIS FIXTURE ALLOW HOT AIMING, SO YOU MAY BE ABLE TO ADJUST WHILE THE FIXTURE IS ON. (FIGURE 5)

FIXTURE INSTALLATION



6. ATTACH THE LENS FRAME TO THE FIXTURE. PUSH IT IN THE OPENING UNTIL IT SNAPS IN PLACE FLUSH AGAINST THE TRIM. MAKE SURE THE LENS IS TILTED TOWARD THE WALL TO BE ILLUMINATED. (FIGURE 6)
7. VERIFY THE WALL IS ILLUMINATED AS DESIRED. TO RE-ADJUST, PRESS ONE OF THE CORNERS OF THE LENS FRAME TO RELEASE IT. RE-ADJUST THE FIXTURE, THEN RE-ATTACH THE LENS FRAME. REPEAT THIS AS MANY TIMES AS NECESSARY. (FIGURE 5)